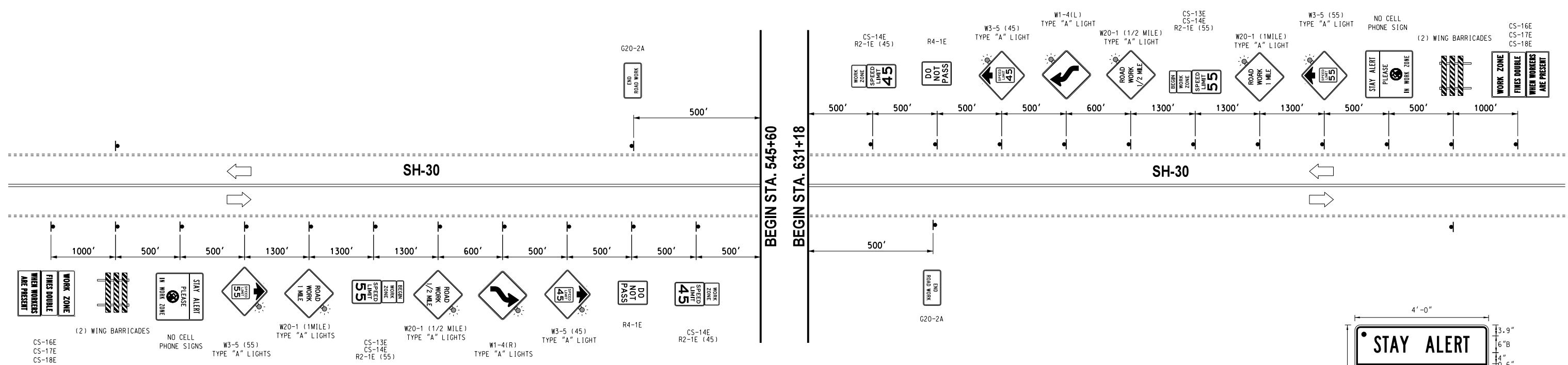


REVISIONS		
NO.	DESCRIPTION	DATE



BORDER
R=1.5"
TH=0.63"
IN=0.47"

NO CELL PHONE SIGN

- 48"x48"
- LEGEND. SYMBOL & BORDER - BLACK NON-REFLECTIVE
BACKGROUND - YELLOW REFLECTIVE
 - ▲ LEGEND. SYMBOL & BORDER - BLACK NON-REFLECTIVE
BACKGROUND - ORANGE REFLECTIVE

DRAWING NOT TO SCALE

Design	RWR	9/13/2016
Drawn	CCC	9/13/2016



**TYPICAL ADVANCE WARNING SIGNS
PHASE 3**

State Job No. 28768(04) Sheet No. 71